



# CUPA PIZARRAS

The world leader in natural slate





TRAIN STATION, TOKYO (JAPAN)

CUPA PIZARRAS **leads the world in slate production.** Our 16 quarries and 22 processing plants combine the latest technology with our traditional know-how and craftsmanship.

Using cutting-edge production and quality controls, CUPA PIZARRAS produces unique, globally recognized natural slates that meet or exceed all international standards.

LEADERS

CUPA PIZARRAS proudly supplies one in every three roofing slates around the globe.

QUALITY

Our unique traceability system tracks each individual slate from the moment they are extracted, helping us maintain our commitment to quality.

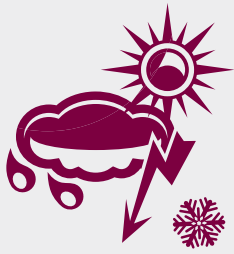
INTERNATIONAL

We export 98% of our slate production to countries across 5 continents, and have regional offices in Spain, France, United Kingdom, Benelux and USA.



CORPORATE HQ

“Our strong commitment to **quality**, constant **innovation** and **sustainability** makes us world leaders in natural slate.”



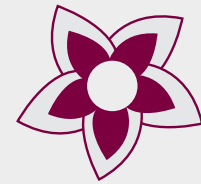
## DURABILITY

Used since roman times, slate is an outstanding material that has stood the test of time. Extraordinary long-lived, remarkably durable, fire resistant and naturally waterproof, natural slate is simply the highest quality roofing material.



## ECO-FRIENDLY

Natural slate is the material with less environmental impact due to its simple manufacturing process. Once extracted, natural slate simply needs to be cut to the required size and packaged for distribution.



## BEAUTY

Slate is a naturally beautiful material that can be found in various shades of black and grey depending of its composition. Our slates cover some of the most iconic buildings around the world, and enhance the value and beauty of any property.

### A CORUÑA

CUPA 98

### LUGO

CUPA 18  
CUPA 12



SPAIN

LEON

CASTILLE  
AND LEON

ZAMORA

CUPA 9

OURENSE  
GALICIA

CUPA 1  
PIZARRAS

CUPA 2  
CUPA 5

Puente de  
Domingo  
Flórez

CUPA 7  
CUPA 6  
CUPA 10  
CUPA 25  
CUPA 3

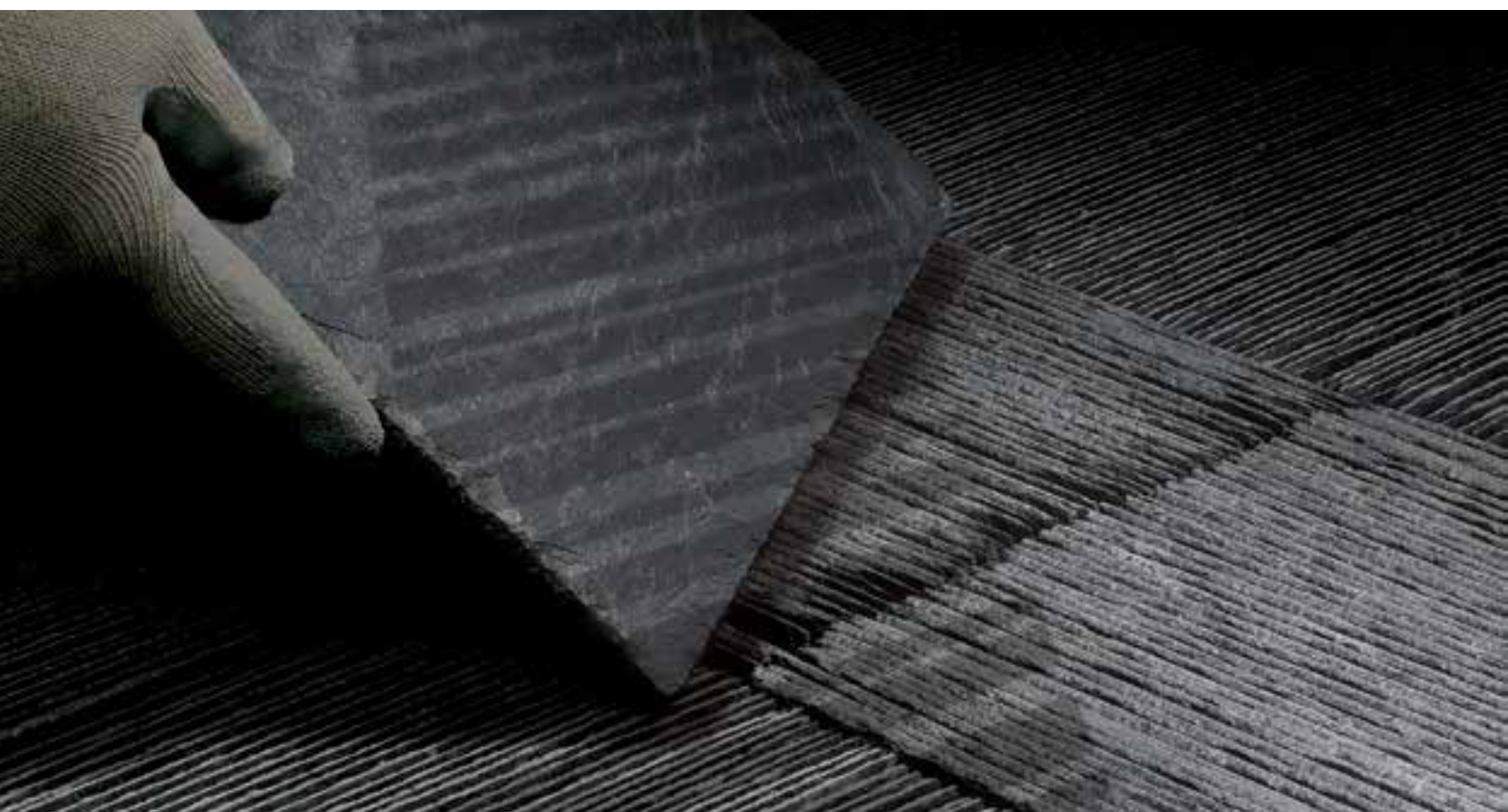
CUPA 27  
CUPA 17

CUPA 13  
CUPA 14  
CUPA 4

OUR  
QUARRIES

## APPROVALS AND CERTIFICATIONS

CUPA PIZARRAS natural slates meet or exceed all international quality standards.



## TRACEABILITY

CUPA PIZARRAS has developed a unique traceability system that identifies each individual slate we produce.

This system ensures complete quality control, and allows us to provide better information to our clients.

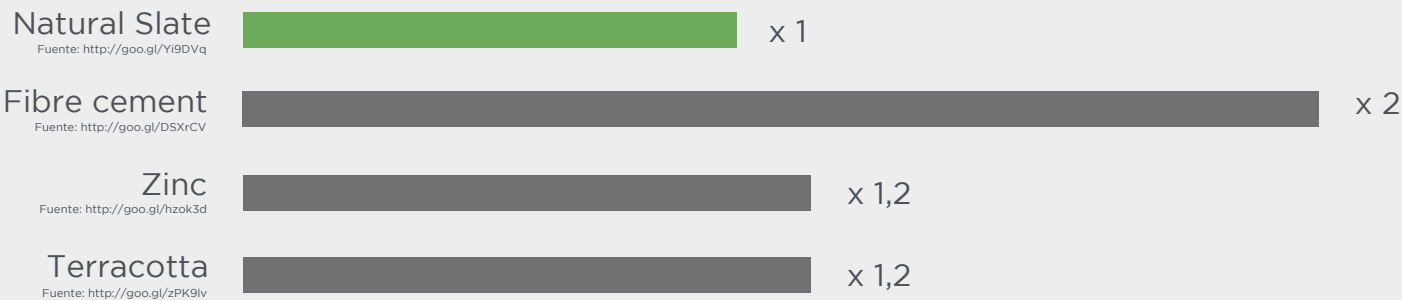
All CUPA PIZARRAS natural slate crates carry a barcode and detailed production and quality inspection data. Each barcode is unique, enabling reliable identification of individual crates and containing information about the origin of the slate, dimensions,

type, test results and quality inspections. Our traceability system even provides information about where and when the slate was processed, and what personnel worked on every individual batch.

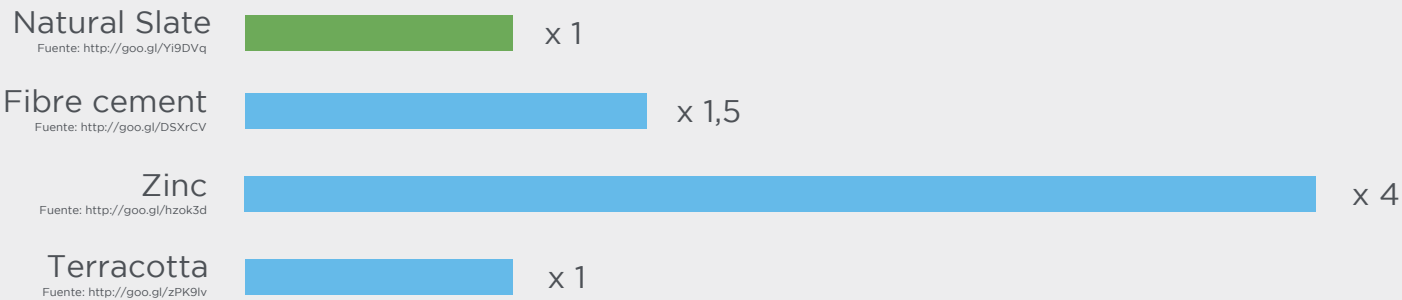
# ECOLOGY



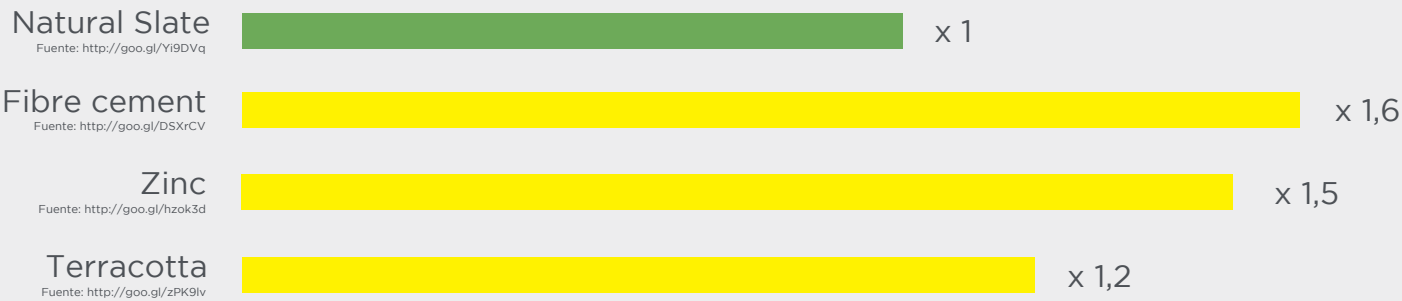
## AIR POLLUTION



## WATER CONSUMPTION



## ENERGY CONSUMPTION

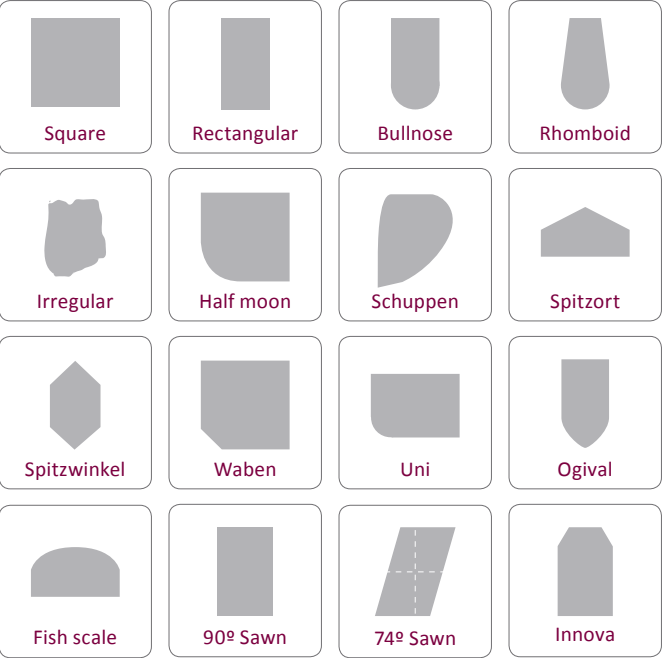


Comparative performed according to data from the environmental certificates “BRE Global Certified Environmental Profile”, published in the database GreenBook Live: <http://www.greenbooklive.com/search/advancedsearch.jsp>

# TRADITIONAL SLATE ROOF

CUPA PIZARRAS extracts a wide range of natural slates from different quarries, available in multiple shapes and sizes.

## COMMON SHAPES\*



## SIZES\*

From 30x20 to 60x30.

*\*Please contact our sales department for any other shapes and sizes.*



SELECTIONS





## R

The result of a rigorous selection. Composed of exceptionally flat natural slates with uniform thickness. Simple and fast installation.

## H

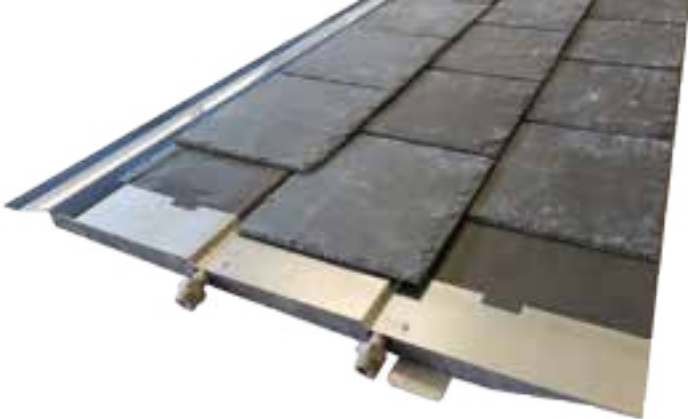
High-quality selected natural slates with slight flatness and thickness variations that meet or exceed all international standards.

## NATURAL

Composed of natural slates with some flatness and thickness variations. This selection maintains the same quality standards, but requires an experienced roofer.

## HEAVY

Exclusive hand-quarried 7-9mm thick natural slates. Our incomparable HEAVY slates give any roof a unique and timeless rustic look.



THERMOSLATE™ is **the first and only natural slate solar panel** that successfully combines energy efficiency with aesthetic architectural integration and almost zero maintenance.

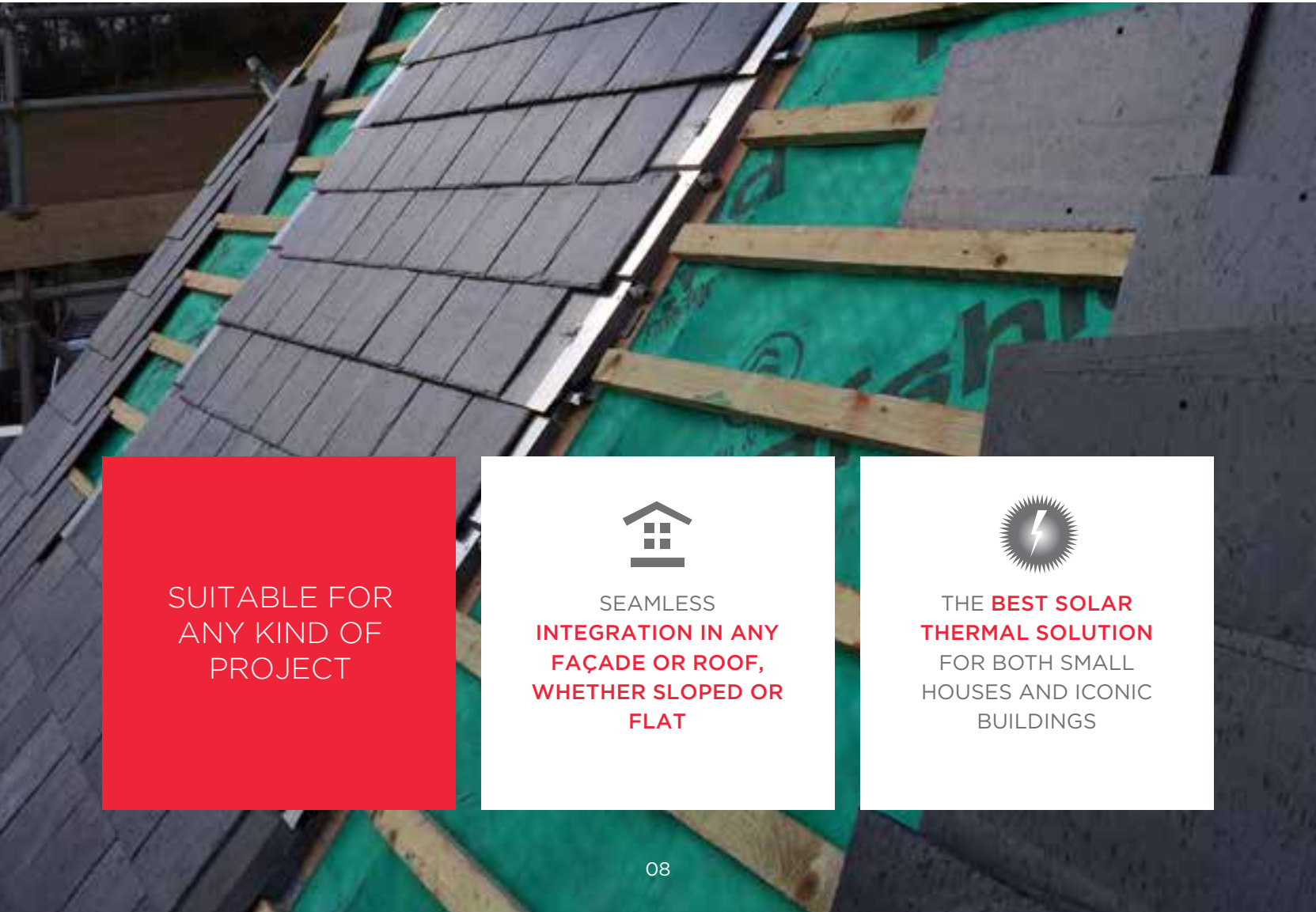
CUPA PIZARRAS is proud to present **a unique and innovative renewable energy solution** that takes full advantage of the incomparable qualities and performance of natural slate.

THERMOSLATE™ is seamlessly integrated in any façade or slate roof (pitched or flat) and produces energy for heating and DHW (domestic hot water). Born to


solve aesthetic issues when rehabilitating natural slate roofs, whether they be iconic buildings and monuments or small houses.

THERMOSLATE™ helps maintain and improve both the aesthetics and efficiency of buildings, is easily installed and requires almost zero maintenance.

THERMOSLATE™, THE FIRST NATURAL SLATE SOLAR PANEL



SUITABLE FOR  
ANY KIND OF  
PROJECT



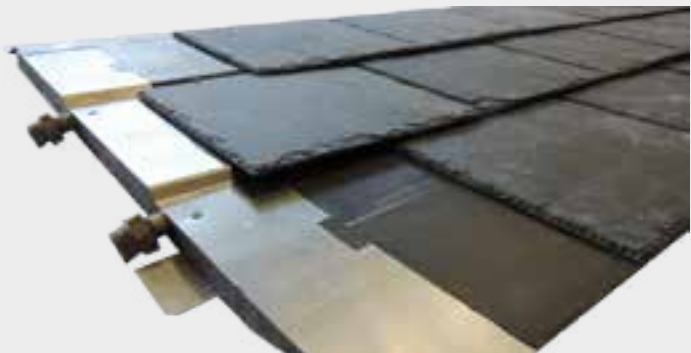
SEAMLESS  
INTEGRATION IN ANY  
FAÇADE OR ROOF,  
WHETHER SLOPED OR  
FLAT



THE **BEST SOLAR**  
**THERMAL SOLUTION**  
FOR BOTH SMALL  
HOUSES AND ICONIC  
BUILDINGS

THERMOSLATE™  
**SLOPED ROOF** SYSTEM/

THERMOSLATE™ solar panel system for sloped roofs can be seamlessly integrated into any slate roof, producing enough energy to cover the heating and DHW needs of an average British household.



THERMOSLATE™  
**FLAT ROOF** SYSTEM/

THERMOSLATE™ solar panel system for flat roofs produces enough energy for DHW and pool heating in houses without sloped roofs or a non-optimal orientation.



INTERNATIONAL  
CERTIFICATIONS:



NEWTOWN LINFORD, LEICESTER (UNITED KINGDOM)



**COMPATIBLE** WITH  
ANY **ENERGY STORAGE**  
AND **DISTRIBUTION**  
**SYSTEM**



**COMPATIBLE** WITH ANY  
TYPE OF **BOILER**

**CTE**

**IN ACCORDANCE**  
WITH **INTERNATIONAL**  
**REGULATIONS**



CUPACLAD™ is a ventilated façade solution with CUPA PIZARRAS natural slate. The natural slate chosen for CUPACLAD™ systems has been specially selected to meet the requirements of a façade cladding.

CUPACLAD™ systems are timeless, lightweight and easy to install. They adapt to all kinds of architectural creation, both in new construction and renovation, providing a modern and contemporary aesthetic.

Traditional natural slate cladding has been reinvented to make it much easier to install and quicker. In addition to this, the use of a ventilated façade is the perfect choice for external thermal insulation.

CUPACLAD™ makes possible the installation of natural slate with horizontal orientation, offering new design possibilities for contemporary architecture. The beauty and durability of natural slate makes it the perfect material for any architectural design.

The development of CUPACLAD™ fixing method has been the result of a design process carried out by our own engineering team.

## CUPACLAD™, THREE DIFFERENT SYSTEMS, DEPENDING ON THE INSTALLATION PROCESS AND THE DESIRED APPEARANCE:

### CUPACLAD™ 101

**Invisible** fixing system. The slate is installed horizontally and it's fixed with two stainless steel screws. The heads of the screws are under the lap and remain invisible.



*\*CUPACLAD™ invisible system uses size 40x20, CUPA PIZARRAS natural slates laid horizontally.*

### CUPACLAD™ 201

**Visible** fixing system. The slate is installed horizontally and it's fixed with two stainless steel brackets. The outer part of the bracket at the bottom of every slate remains slightly visible.



*\*CUPACLAD™ visible system uses size 60x30 CUPA PIZARRAS natural slates laid horizontally.*

### CUPACLAD™ 301

**Visible or invisible** fixing system. The slate is installed according to the traditional way, with vertical orientation.



*\*Available in all common sizes.*





**CUPA**PIZARRAS

121552, Москва, ул. Островная 2, БЦ «Гольф-Клуб», офис 223  
8-495-989-43-17 / 8-800-100-43-17  
[www.cupapizarras.ru](http://www.cupapizarras.ru) / [info@archi-tile.ru](mailto:info@archi-tile.ru)

